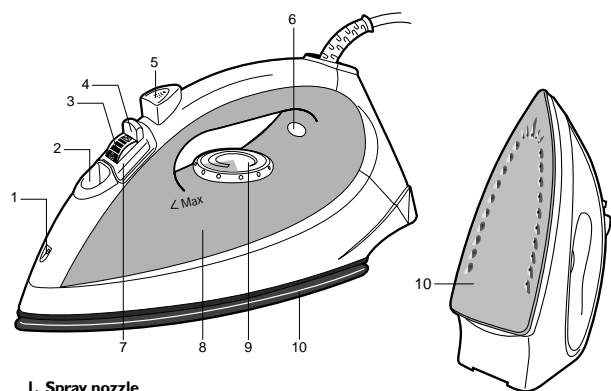


PRIMA



1. Spray nozzle
2. Water tank filler inlet. Only use tap water
3. Double steam button. To obtain more steam.
4. Steam control slide. To control steam flow.
5. Spray button. To moisten linen
6. Thermostat indicator light. Goes out when the temperature has been reached.
7. Anti-calc valve. To be cleaned once per month
8. Water tank maximum fill line. Do not exceed this limit.
9. Temperature control dial
10. Soleplate

WARNING!

Remove the soleplate protector before heating up the iron (depending on the model)

Warning!

Before using your iron with the steam function for the first time, we recommend that you operate it in horizontal position for a few moments, away from your linen, ie press several times on the double steam button. During the first few uses, a harmless odour and smoke may be given off. This has no effect on the use of the iron and will disappear quickly.

What water to use?

Your appliance has been designed to function with tap water. However, it is necessary to operate the Self-Clean function regularly to clean the steam chamber and eliminate hard water deposits. If your water is very hard you may mix tap water with distilled water in the following proportions: 50% tap water, 50% distilled water.

Types of water not to use:

Heat concentrates the elements contained in water during evaporation. The types of water listed below contain organic waste or mineral elements that can cause spitting, brown staining, or premature wear of the appliance: water from clothes dryers, scented or softened water, water from refrigerators, batteries, or air conditioners, pure distilled water, or rain water.

2. DRY IRONING

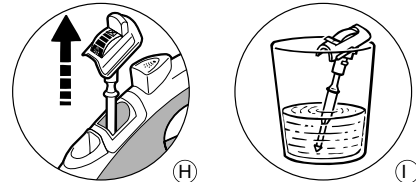
- Set the temperature.
- Set the steam control on DRY (see diagram A).
- You may start ironing when the thermostat light goes out.

3. MAINTAINING YOUR IRON**BE CAREFUL!**

Unplug your iron and let it cool down before cleaning it

CLEANING THE ANTI-CALC VALVE (Once per month):

- Unplug your iron and empty the water tank.
 - Set the steam control slide on DRY.
 - To remove the anti-calc valve, pull it up using the tabs located on each side (H) NEVER TOUCH THE END OF THE VALVE
 - Soak the valve in a cup of white spirit vinegar or plain lemon juice for 4 hours (I).
 - Rinse the valve in tap water.
 - Replace the anti-calc valve into position
- THE IRON WILL NOT FUNCTION WITHOUT THE ANTI-CALC VALVE.

**USING THE SELF-CLEANING FUNCTION:**

In order to extend the life of your iron, use the Self-Cleaning function once per month.

- Unplug your iron and set the steam control slide on DRY.
- Fill the water tank up to the Max level (see recommendations for the types of water to use).
- Place your iron on its heel and set the temperature control dial on MAX.
- Plug in your iron and wait until the thermostat light goes out.
- Unplug the iron and hold it over a sink in the horizontal position.
- Raise the anti-calc valve.
- Shake the iron gently, over the sink, until all of the water in the water tank (with the impurities) has flowed out via the soleplate.
- At the end of the operation, put the anti-calc valve back into position.
- Turn the iron back on for 2 minutes, setting it on its heel, to dry the soleplate.
- Unplug the iron, and when the soleplate is just warm, wipe it with a soft cloth.

Recommendation :

The self-cleaning function helps to delay the scaling of your iron. DO NOT USE CHEMICAL DESCALING AGENTS

CLEANING THE SOLEPLATE:

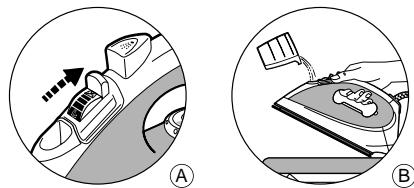
- While the soleplate is still just warm, clean it by rubbing it with a moist, non-metallic pad.

4. STORING YOUR IRON

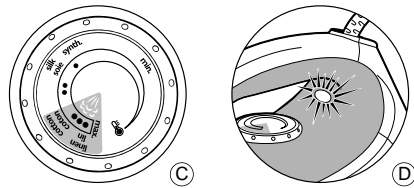
- Unplug it and wait until the soleplate has cooled.
- Empty the water tank and set the steam control to DRY.
- Store the iron on its heel.

I. STEAM IRONING**FILLING THE WATER TANK**

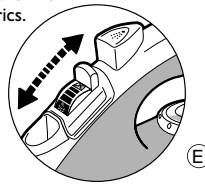
- Unplug your iron before filling it.
- Set the steam control dial on DRY (A).
- Place your iron on a stable, horizontal heat-resistant surface shown in the diagram (B) below, and fill with water through the water tank filler inlet.
- Do not exceed the MAX line indicated on the water tank.

**SETTING THE TEMPERATURE**

- Set the temperature control dial shown in the diagram below (C) referring to the table below (or on the heel).
- The thermostat light comes on. It goes out as soon as the soleplate is hot enough (D).

**SETTING THE STEAM LEVEL (E)**

- In order to avoid water dripping from the iron onto the linen :
- Turn off the steam when ironing silk or synthetic fabrics.
- Set it at the minimum position for wool.

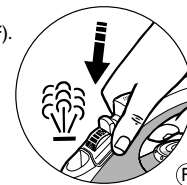
**WHAT TEMPERATURE AND WHICH STEAM SETTING TO USE?**

FABRIC	POSITION OF TEMPERATURE CONTROL DIAL	STEAM SETTING POSITION
LINEN	MAX	☀
COTTON	•••	☀
WOOL	••	☀
SILK	•	☀
SYNTHETIC Polyester, Acetate, Acrylic, Nylon	•	☀

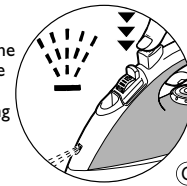
☐ STEAM ZONE

OBTAINING MORE STEAM

- Press the Double Steam button from time to time (F).
- Steam flow is increased.

**MOISTENING THE LINEN (SPRAY)**

- When steam or dry ironing, press several times on the Spray Button to moisten the linen (G) and to remove stubborn creases.
- Make sure that there is water in the tank before using this button.

**Recommendations:****Fabrics and ironing temperatures:**

- Your iron heats up quickly : begin by ironing those fabrics that are ironed at low temperatures, then go on to those requiring a higher temperature;
- If you turn down the thermostat, wait until the thermostat light comes back on before ironing again.
- When ironing fabrics with mixed fibres, set the ironing temperature for the most delicate of the fabrics.

5- IS THERE A PROBLEM ?**Problems**

- **Water drips from the holes in the soleplate**

Possible causes

- The chosen temperature is too low and does not allow for the formation of steam.
- You are using steam while the iron is not hot enough.
- The steam flow is too high.
- You have stored the iron horizontally, without emptying it and without setting it to DRY.

Solutions

- Set the temperature control dial in the coloured zone (from ●● to MAX)
- Wait until the indicator light goes out.
- Reduce the steam flow.
- See the section "Storing your iron".

- **Brown streaks come through the holes in the soleplate and stain the fabrics.**

- You are using chemical descaling agents.
- You are using pure distilled water.
- Fabric fibres have accumulated in the holes of the soleplate and are burning
- Your linen is not rinsed sufficiently or you have ironed a new garment before washing it.

- Do not add any descaling agents to the water in the water tank.
- Do a self-cleaning and use tap water.
- Do a self-cleaning. Clean the soleplate with a non-metallic sponge. Vacuum the holes of the soleplate from time to time.
- Ensure linen is rinsed thoroughly to remove any soap deposits or chemicals on new garments which have been sucked up by the iron.

- **The soleplate is dirty or brown and can stain the linen.**

- You are using too high a temperature.
- You are using starch.

- Clean the soleplate as indicated above. See the temperature table to correctly set the thermostat.
- Clean the soleplate as indicated above. Always spray starch onto the reverse side of the fabric to be ironed.

- **There is little or no steam.**

- The water tank is empty.
- The anti-calc valve is dirty.
- Your iron has a build-up of scale.
- Your iron has been used dry for too long.

- Fill it with tap water.
- Clean the anti-calc valve.
- Clean the anti-calc valve and do a self-cleaning.
- Do a self-cleaning.

- **The soleplate is scratched or damaged.**

- You have placed your iron flat on a metallic rest-plate

- Always set your iron on its heel.

HELPLINE :

If you have any problem or queries, please call our Customer Relations Team first for expert help and advice on : 0845 602 1454 – UK (01) 4751947 – IRELAND

Or consult our web site : www.tefal.co.uk

This product has been designed for domestic use only.

Any professional use, inappropriate use or failure to comply with the instructions, the manufacturer accepts no responsibility and the guarantee will not apply.

FOR YOUR SECURITY

- **Warning!** The voltage of your electrical installation must correspond to that of the iron (220V-240V AC or 127V depending on the model). Connecting to the wrong voltage may cause irreversible damage to the iron and will invalidate the guarantee.
- This iron must always be plugged into an earthed socket.
- If using a mains extension lead, ensure that it is correctly rated (10A or 13A for UK only), with an earth.
- If the electrical cord becomes damaged, it must be immediately replaced by an Approved Service Centre to avoid any danger.
- Never immerse your iron in water!
- The appliance must be unplugged before filling or emptying the water tank.
- If the appliance falls, have it checked by a professional before using it again ; unseen damage may be dangerous.
- The soleplate may be very hot :
 - Never touch it.
 - Always let it cool down before putting it away.
 - Never leave your iron unattended when it is plugged in or while the soleplate is still hot.
 - Always keep your iron out of the reach of children.

NEVER DISMANTLE YOUR IRON YOURSELF AS THIS WILL NEGATE THE GUARANTEE ; ALWAYS CONTACT AN APPROVED SERVICE CENTRE.